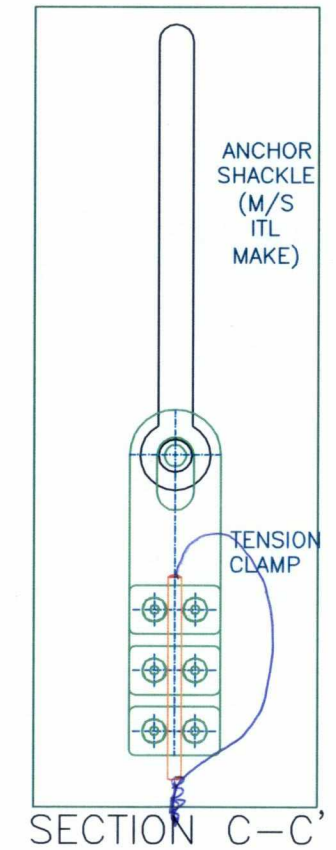
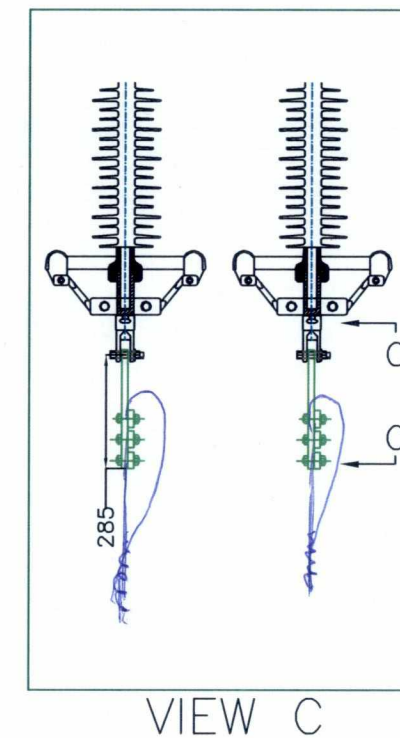
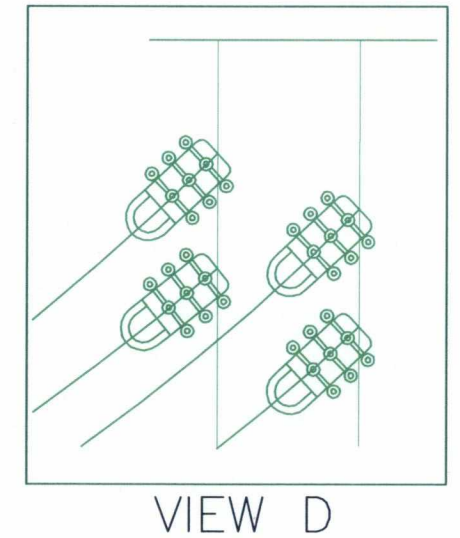
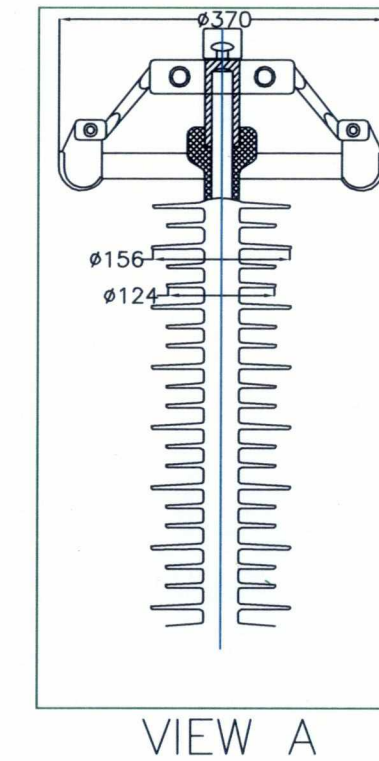
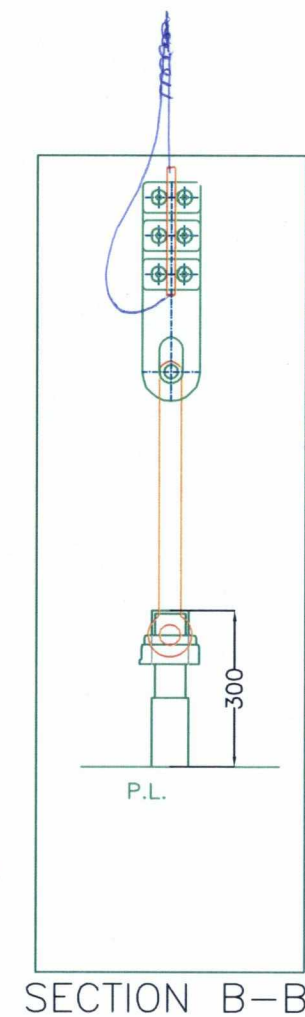
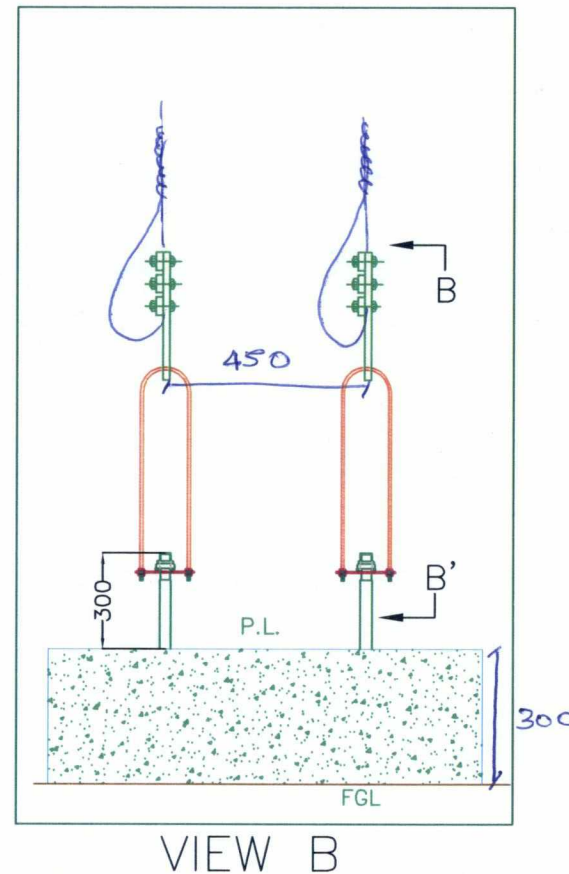
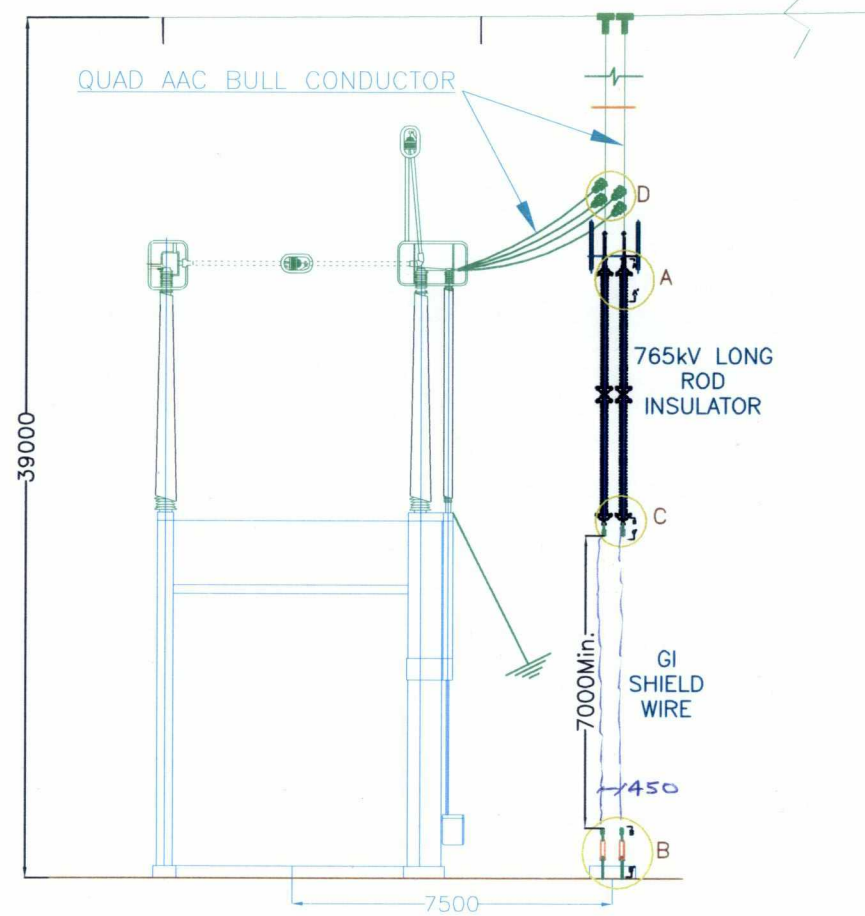


- Note: 1. All dimensions are in mm.  
2. The Insulator shall be installed in such a way as indicated, to avoid accumulation of rain water, i.e. shed profile projections towards down like other porcelain equipment.

# ANNEXURE-A



	केंद्राधिकारी / निर्माण / हेतु अनुमोदित / जारी।
	केंद्राधिकारी / निर्माण / हेतु अनुमोदित / जारी।
	बसने दी गई दिवसियों एवं आशोधनों को सम्मिलित किया जाए। कृपया आशोधित दस्तावेज अनुमोदनार्थ प्रस्तुत करें।
	III. दिवसियों सम्मिलित कर पुनः अनुमोदनार्थ प्रस्तुत करें।
	IV. सूचनाएं एवं रिपोर्ट हेतु।
31/10/14	पावर ग्रिड कॉर्पोरेशन ऑफ इंडिया लिमिटेड
(तिथि)	अभियांत्रिकी (उपकेंद्र) गुडगाँव, हरियाणा

Cat-I

CLIENT:	POWER GRID CORPORATION OF INDIA LIMITED (A GOVERNMENT OF INDIA ENTERPRISE)	DRAWN	MP	SCALE
PROJECT:	EXTENSION OF 765kV S/S -PACKAGE-B	CHECKED	DP	1:600
DRAWING:	GUY ARRANGEMENT - 765KV SUBSTATION RAIPUR, WARDHA & AURANGABAD	APPROVED	BKM	DATE
		PASSED	VSC	30.10.2014
		DRAWING No.	GUY-ARR-001	
		SHEET No. 1 OF 1	REV. '0'	

REV	DESCRIPTION	APPD.	DATE	REF DRG

Any distribution, copying, review, retransmission, dissemination or other use of this design or the information contained in it, without our prior approval, is strictly prohibited. (c) TBEA.

**TBEA**  
Always Reliable

TBEA Shenyang Transformer Group Co. Ltd.

Doc. by - TBEA Energy (India) Pvt. Ltd